



# earth elements

DRAPERY HARDWARE BY WESLEY MANCINI



# earth elements

---

DRAPERY HARDWARE BY WESLEY MANCINI

Naturally beautiful best describes the **earth elements** drapery hardware collection by Wesley Mancini, designed exclusively for Joanne / J.F. Fabrics. Inspired by his extensive travels and driven by his passion for design, Wesley has created a stunning carved wood and hand threaded finial collection. Each piece has been masterfully created, drawing on inspiration from the decorative Byzantine era, rich Persian culture and 18th century artisan ceramics. Many of the highly unique hand threaded finials have been accented with a layer of netting evoking a sense of warmth, delicate intricacy and a deeply rooted connection to natural forms, further enriched by the earthy palette of this collection. The handcrafted wood pieces have been carefully planned to display the nicks, nail marks and imperfections, therefore creating a distressed finish and giving the look of a gently aged artisan's piece.



*W. Mancini*

---

- 3-7 threaded collection
- 8-15 carved wood collection
- 16-17 accessories and endcaps
- 18 specifications





**FINIALS**

Hand threaded finials on pages 4 and 5 are only available in finishes as shown. Sold in pairs or individually.



2" **ECW169**  
FINISH #95J5441ST / FITS 2" ROD

2" **FNT165**  
FINISH #95J5441ST / FITS 2" ROD



**FNT165 - 95J5441ST**



**FNT166 - 95J5441ST**



**FNT167 - 95J5441ST**



**FNT168 - 95J5441ST**

Finials on page four are only available in finish **95J5441ST** as shown



**RODS**

Wood rods are available in 2" diameter and lengths of 72" and 96". Sold individually.

**RINGS**

Color matched resin rings. Sold in packages of 7.

**ACCESSORIES**

See page 17 for complete range of available accessories.

**ENDCAPS**

See pages 16-17 for complete range of available endcaps. Sold in pairs or individually. Chart shows endcap coordinates for threaded finials shown on pages 4 and 5.

FINIAL	ENDCAP
FNT165	= ECW169
FNT166	= ECW170
FNT167	= ECW171
FNT168	= ECW172
FNT209	= ECW213
FNT210	= ECW214
FNT211	= ECW215
FNT212	= ECW215



**FNT209**  
FINISH #12J5441PI / FITS 2" ROD 2"

**ECW213**  
FINISH #12J5441PI / FITS 2" ROD 2"



FNT209 - 12J5441PI



FNT210 - 12J5441PI



FNT211 - 12J5441PI



FNT212 - 12J5441PI

Finials on page five are only available in finish 12J5441PI as shown

**FINIALS**

Hand threaded finials on pages 6 and 7 are only available in finishes as shown. Sold in pairs or individually.



2" **ECW191**  
FINISH #34J5441CN / FITS 2" ROD

2" **FNT186**  
FINISH #34J5441CN / FITS 2" ROD



Finials on page six are only available in finish 34J5441CN as shown



**RODS**

Wood rods are available in 2" diameter and lengths of 72" and 96". Sold individually.

**RINGS**

Color matched resin rings. Sold in packages of 7.

**ACCESSORIES**

See page 17 for complete range of available accessories.

**ENDCAPS**

See pages 16-17 for complete range of available endcaps. Sold in pairs or individually. Chart shows endcap coordinates for threaded finials shown on pages 6 and 7.

FINIAL	ENDCAP
FNT185	= ECW190
FNT186	= ECW191
FNT187	= ECW192
FNT188	= ECW193
FNT189	= ECW194
FNT195	= ECW202
FNT196	= ECW203
FNT197	= ECW204
FNT198	= ECW205
FNT199	= ECW206
FNT200	= ECW207
FNT201	= ECW208



**ECW206**  
FINISH #38J5441CL / FITS 2" ROD 2"



FNT200 - 38J5441CL



FNT201 - 38J5441CL

**FNT199**  
FINISH #38J5441CL  
FITS 2" ROD 2"



FNT195 - 38J5441CL



FNT196 - 38J5441CL



FNT197 - 38J5441CL



FNT198 - 38J5441CL



FNT199 - 38J5441CL

Finials on page seven are only available in finish **38J5441CL** as shown

# earth elements

DRAPERY HARDWARE BY WESLEY MANCINI

Wesley Mancini is considered a dominant force as an artist and entrepreneur within the design industry. He has been the recipient of many awards, has been featured in the Museum of Contemporary Crafts in New York City and also in a traveling exhibition “Textiles for the Eighties”. Wesley has been featured in numerous articles including the “Design 100” issue of *Metropolitan Home* where he was afforded a place among the top 100 design resources available globally. Most recently, Wesley has devoted his talents to create a decorative trim and tassel, fabric and drapery hardware portfolio exclusively for Joanne / J.F. Fabrics, inclusive of the **earth elements** collections.



*Wesley Mancini*

**finial:** FNW174 / **rod:** RDW181 – 2”  
**brackets:** BRW178 / **rings:** RIR184 / **finish:** 12J5441PI  
**fabric:** INSPIRE / **color:** 36J5231







**FINIALS**

Carved wood finials on pages 10 and 11 are available in four finishes as shown. Sold in pairs or individually.

**ENDCAPS**

See pages 16-17 for complete range of available endcaps. Sold in pairs or individually.



2"

**ECW172**  
FINISH #95J5441ST / FITS 2" ROD

2"

**FNW176**  
FINISH #95J5441ST / FITS 2" ROD



**FNW176-95J5441ST**



**FNW176-12J5441PI**



**FNW176-34J5441CN**



**FNW176-38J5441CL**

Finial **FNW176** is available in four finishes as shown

**RODS**

Wood rods are available in 2" diameter and lengths of 72" and 96". Sold individually.

**RINGS**

Color matched resin rings. Sold in packages of 7.

**ACCESSORIES**

See page 17 for complete range of available accessories.



**FNW174**  
FINISH #12J5441PI / FITS 2" ROD 2"

**ECW214**  
FINISH #12J5441PI / FITS 2" ROD 2"



**FNW174 - 38J5441CL**



**FNW174 - 34J5441CN**



**FNW174 - 12J5441PI**



**FNW174 - 95J5441ST**

Finial **FNW174** is available in four finishes as shown



**FINIALS**

Carved wood finials on pages 12 and 13 are available in four finishes as shown. Sold in pairs or individually.

**ENDCAPS**

See pages 16-17 for complete range of available endcaps. Sold in pairs or individually.



2" **ECW194**  
FINISH #34J5441CN / FITS 2" ROD

2" **FNW175**  
FINISH #34J5441CN / FITS 2" ROD



**FNW175 - 95J5441ST**



**FNW175 - 12J5441PI**



**FNW175 - 34J5441CN**



**FNW175 - 38J5441CL**

Finial **FNW175** is available in four finishes as shown

**RODS**

Wood rods are available in 2" diameter and lengths of 72" and 96". Sold individually.

**RINGS**

Color matched resin rings. Sold in packages of 7.

**ACCESSORIES**

See page 17 for complete range of available accessories.



**ECW208**  
FINISH #38J5441CL / FITS 2" ROD 2"

**FNW173**  
FINISH #38J5441CL / FITS 2" ROD 2"



FNW173 - 38J5441CL



FNW173 - 34J5441CN



FNW173 - 12J5441PI



FNW173 - 95J5441ST

Finial FNW173 is available in four finishes as shown

**FINIALS**

Carved wood finial on page 14 is available in four finishes as shown. Sold in pairs or individually.

**ENDCAPS**

See pages 16 – 17 for complete range of available endcaps. Sold in pairs or individually.

**RODS**

Wood rods are available in 2" diameter and lengths of 72" and 96". Sold individually.

**RINGS**

Color matched resin rings. Sold in packages of 7.

**ACCESSORIES**

See page 17 for complete range of available accessories.



2"

**FNW177**  
FINISH #34J5441CN / FITS 2" ROD

2"

**ECW190**  
FINISH #34J5441CN / FITS 2" ROD



**FNW177 - 95J5441ST**



**FNW177 - 12J5441PI**



**FNW177 - 34J5441CN**



**FNW177 - 38J5441CL**

Finial **FNW177** is available in four finishes as shown





**finial:** FNW176 / **rod:** RDW181 - 2"  
**brackets:** BRW178 / **rings:** RIR184 / **finish:** 34J5441CN  
**fabric:** MARIKA / **color:** 32J5451

**ENDCAPS**

Hand threaded endcaps provide the finishing touch to any rod when space does not permit for use of a finial or simply to achieve a desired look. Sold in pairs or individually.

**RODS**

Wood rods are available in 2" diameter and lengths of 72" and 96". Sold individually.

**RDW181** – 72" x 2" diameter rod  
**RDW182** – 96" x 2" diameter rod



**ECW169** – endcap  
95J5441ST



**ECW170**  
95J5441ST



**ECW171**  
95J5441ST



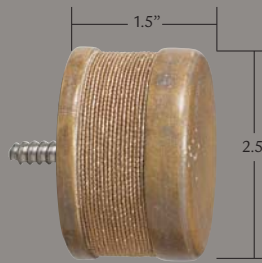
**ECW172**  
95J5441ST



**ECW213** – endcap  
12J5441PI



**ECW214**  
12J5441PI



**ECW215**  
12J5441PI



**ECW190** – endcap  
34J5441CN



**ECW191**  
34J5441CN



**ECW192**  
34J5441CN



**ECW193**  
34J5441CN



**ECW194**  
34J5441CN



**ECW202** – endcap  
38J5441CL



**ECW203**  
38J5441CL



**ECW204**  
38J5441CL



**ECW205**  
38J5441CL



**ECW206**  
38J5441CL



**BRACKETS and TIEBACKS**

Hand carved from solid wood and designed to coordinate with all finials and endcaps. Sold individually.

**RINGS**

Color matched resin rings. Sold in packages of 7.

**FINISHES**

Accessories are available in four finishes:



95J5441ST - stone



12J5441PI - pickled oak



34J5441CN - chestnut



38J5441CL - chocolate



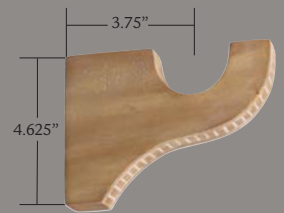
tieback: TBW183 / finish: 34J5441CN  
fabric: MARIKA / color: 32J5451



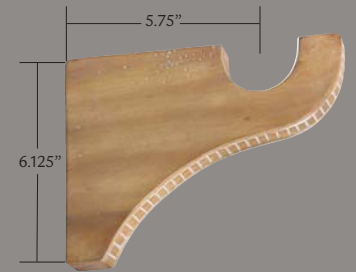
TBW183 - 3.75" diameter tieback



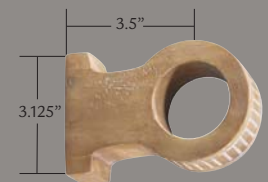
RIR184  
resin ring for 2" rod



BRW178  
small wall bracket



BRW179  
large wall bracket



BRW180  
loop bracket



SPW216 - 10J5441MI - splice for rod



ECW207  
38J5441CL



ECW208  
38J5441CL





**FNT165**  
L: 5" – H: 3.25"  
Base: 2.375" – Fits 2" rod  
Finish: 95J5441ST



**FNT195**  
L: 5" – H: 3.25"  
Base: 2.375" – Fits 2" rod  
Finish: 38J5441CL



**FNT209**  
L: 5" – H: 3.25"  
Base: 2.375" – Fits 2" rod  
Finish: 12J5441PI



**FNT166**  
L: 5" – H: 3.25"  
Base: 2.375" – Fits 2" rod  
Finish: 95J5441ST



**FNT196**  
L: 5" – H: 3.25"  
Base: 2.375" – Fits 2" rod  
Finish: 38J5441CL



**FNT210**  
L: 5" – H: 3.25"  
Base: 2.375" – Fits 2" rod  
Finish: 12J5441PI



**FNT167**  
L: 5" – H: 3.25"  
Base: 2.375" – Fits 2" rod  
Finish: 95J5441ST



**FNT197**  
L: 5" – H: 3.25"  
Base: 2.375" – Fits 2" rod  
Finish: 38J5441CL



**FNT211**  
L: 5" – H: 3.25"  
Base: 2.375" – Fits 2" rod  
Finish: 12J5441PI



**FNT168**  
L: 5" – H: 3.25"  
Base: 2.375" – Fits 2" rod  
Finish: 95J5441ST



**FNT198**  
L: 5" – H: 3.25"  
Base: 2.375" – Fits 2" rod  
Finish: 38J5441CL



**FNT212**  
L: 5" – H: 3.25"  
Base: 2.375" – Fits 2" rod  
Finish: 12J5441PI



**FNT185**  
L: 5" – H: 3.25"  
Base: 2.375" – Fits 2" rod  
Finish: 34J5441CN



**FNT199**  
L: 5" – H: 3.25"  
Base: 2.375" – Fits 2" rod  
Finish: 38J5441CL



**FNW173**  
L: 6.75" – H: 3.75"  
Base: 2.625" – Fits 2" rod  
Finishes: see page 13



**FNT186**  
L: 5" – H: 3.25"  
Base: 2.375" – Fits 2" rod  
Finish: 34J5441CN



**FNT200**  
L: 5" – H: 3.25"  
Base: 2.375" – Fits 2" rod  
Finish: 38J5441CL



**FNW174**  
L: 7" – H: 4.5"  
Base: 2.625" – Fits 2" rod  
Finishes: see page 11



**FNT187**  
L: 5" – H: 3.25"  
Base: 2.375" – Fits 2" rod  
Finish: 34J5441CN



**FNT201**  
L: 5" – H: 3.25"  
Base: 2.375" – Fits 2" rod  
Finish: 38J5441CL



**FNW175**  
L: 5.75" – H: 4.25"  
Base: 2.625" – Fits 2" rod  
Finishes: see page 12



**FNT188**  
L: 5" – H: 3.25"  
Base: 2.375" – Fits 2" rod  
Finish: 34J5441CN



**ENDCAP**  
L: 1.5" – 2.5" ø  
Base: 2.5" – Fits 2" rod  
Finishes: see pages 16–17



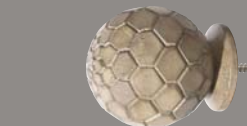
**FNW176**  
L: 5.25" – H: 3.75"  
Base: 2.625" – Fits 2" rod  
Finishes: see page 10



**FNT189**  
L: 5" – H: 3.25"  
Base: 2.375" – Fits 2" rod  
Finish: 34J5441CN



**TBW183**  
3.75" ø – Projection: 4.5"  
Base: 1.375"  
Finishes: see page 17



**FNW177**  
L: 4.25" – H: 3.75"  
Base: 2.625" – Fits 2" rod  
Finishes: see page 14

**RDW181** – 72" x 2" ø rod  
**RDW182** – 96" x 2" ø rod  
Finishes: see page 17



# earth elements

DRAPERY HARDWARE BY WESLEY MANCINI

**earth elements** is a complete line of drapery hardware which has been designed to meet your every need. This comprehensive catalogue will assist you with every project and installation. To better understand our attention to detail, each finial has been highlighted in all of our handcrafted finishes. Please contact your local Sales Representative to assist you in accomplishing your objectives.

**Installations:** We recommend use of a professional installer.

**Contract:**

The **earth elements** drapery hardware by Wesley Mancini product line is versatile and commonly used in commercial installations. Contact your Sales Representative for contract quotations.

**Loaner and replacement color chips** are available upon request through our showroom or online at:

**Canada:** [www.joanefabrics.com](http://www.joanefabrics.com)

**USA:** [www.jffabrics.com](http://www.jffabrics.com)

**Ordering:** Always include item and finish code.

**Shipping:**

Canadian orders ship FOB Oakville, Ontario.

US orders ship FOB Buffalo, NY.

**Claims and Return Policy:**

1. No claims will be considered after 10 days from invoice date.
2. No claims will be considered for more than the value of the invoice.
3. Our error – full credit.
4. Customer error – full credit less 25% restocking charge and freight costs.
5. Minimum restocking charge of \$50.00
6. No returns considered after 30 days from invoice date.
7. No returns on rods that have been cut.

**A return authorization number** must be obtained for all returns and Joanne / J.F. Fabrics will arrange for pick up of the shipment. A 25% or minimum \$50.00 restocking charge and freight charges apply. Items being picked up must be packaged in the same fashion as they were received, to ensure they are in perfect quality for credit.

---

**QUICK SHIP:**

All items are in stock for immediate delivery.

---

JOANNE FABRICS (CANADA) INC.

J.F. FABRICS (USA) INC.

**In Canada:**

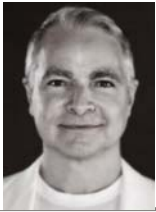
(English) 800-268-2050 • (French) 800-268-2643

**In the United States:** 800-461-1349

**Fax:** 905-829-0800

[www.joanefabrics.com](http://www.joanefabrics.com) • [www.jffabrics.com](http://www.jffabrics.com)





*U. Mancini*



JOANNE FABRICS (CANADA) INC.

J.F. FABRICS (USA) INC.

IN CANADA: (ENGLISH) 800-268-2050 • (FRENCH) 800-268-2643

IN THE UNITED STATES: 800-461-1349

FAX: 905-829-0800

[WWW.JOANNEFABRICS.COM](http://WWW.JOANNEFABRICS.COM)

[WWW.JFFABRICS.COM](http://WWW.JFFABRICS.COM)

J.F. FABRICS (USA) INC. IS A SUBSIDIARY OF JOANNE FABRICS (CANADA) INC.

